

Using the Color Scrolling List Object

Integration Designer allows for the ability to add a scrolling list to RTI color touchscreen controllers. The color scrolling list object creates a scrollable page with buttons, channel icons or cover art, and macros for each CD/DVD in a jukebox, cable/satellite channel, or any other component with many selections available. When selected, the scrolling list properties dialog appears and is where you enter information about the list.

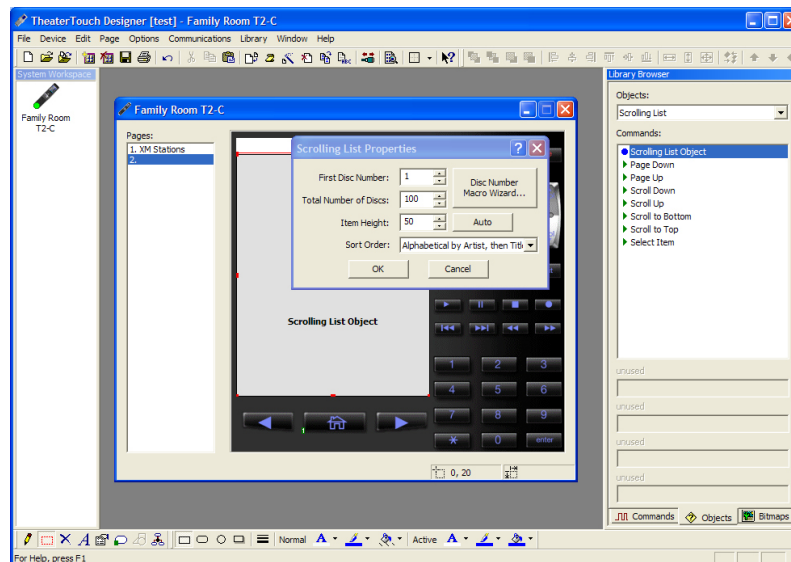
Special Notes:

- Make sure your RTI controller has the latest firmware installed, as this may be required for the scrolling list object to function properly. Firmware updates are available on the RTI website.

Step 1: Select the Scrolling List option from the “Objects” tab of the library browser

- A window will appear with a “Scrolling List Object” as the first item listed. Left click on the Scrolling List Object and drag it onto the display of the device. The Scrolling List Object size can be adjusted to preference.

- After placing the Scrolling List Object on the display, window will appear, labeled “Scrolling List Properties”.



Step 2: Set the Scrolling List Properties

Title

- Enter in this box a name for the scrolling list

First Disc Number

- Select the starting disc, song number or station based on the type of equipment being controlled

This is usually one or zero, but doesn't have to be. (Ex: Creating a scrolling list for radio stations on DirecTV would have a first disc number starting at 800). The purpose of this number is to allow the Disc Number Macro Wizard to build macros with the correct infrared codes to control the jukebox/cable box etc.

Total Number of Discs

- Select the total number of discs that are going to be in your list. This should usually be equal to the total capacity of the jukebox or range of channels used, even if you are not currently using every position. This makes it easier to append disc/channel macros in the future.

Disc Number Macro Wizard

- Click on this button to run a wizard that automatically builds the macros for each entry in the list. The Disc Number Macro Wizard will walk you through the steps to configure for control of the desired equipment. Please refer to the Integration Designer Programming Manual if you have specific questions on this step. After executing the wizard, you can still make manual changes to any of the macros.

Warning: Running this wizard will overwrite any existing macros in the list.

Wizard Steps -

Page 1

- Select the type of equipment being controlled
- Select whether or not the macros should be built with a leading "0" for discs/channels
- If you are using a control processor with IR routing capabilities, select the port to be used

Page 2

- Enter any commands that need to be sent before or after the disc/channel numbers, such as "Enter"

Item Height

- This will determine the height of each row of the scrolling list. The "Auto" tab will automatically size the row to the height of the largest bitmap in the scrolling list.

Note: When manually assigning an item height for a scrolling list, any graphics which are larger than the assigned height will not be visible in the scrolling list.

*See Important Note on page 4 regarding the scrolling list object size.

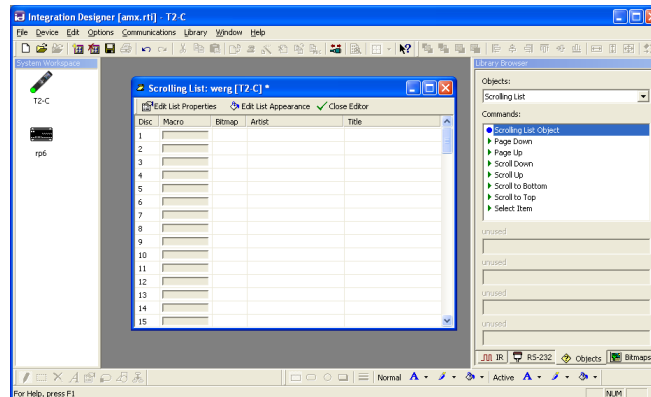
Sort Order

- Select the criteria for sorting the list entries when they are displayed on the device's display.

Your options are:

- Unsorted (Disc number order)
- Alphabetical by Artist then Title
- Alphabetical by Title then Artist

After completing the Disc Number Macro Wizard procedure, click "OK" on the Scrolling List Properties tab. The Scrolling List Editor window should now appear, similar to the image seen below.



Step 3: Add bitmaps and descriptions for each disc/channel in the Scrolling List Editor

The Scrolling List Editor is used to add, remove, or change entries in a scrolling list. It displays a table that contains the artist and title information which can also be used to display channel names, and also provides the option of adding a bitmap such as a TV channel or satellite radio station logo.

Note: Rows left blank (no bitmap or artist/title added) will not appear in the final scrolling list. This can be useful when creating a scrolling list for favorite satellite music stations, for example. Simply fill in the rows corresponding to the desired stations.

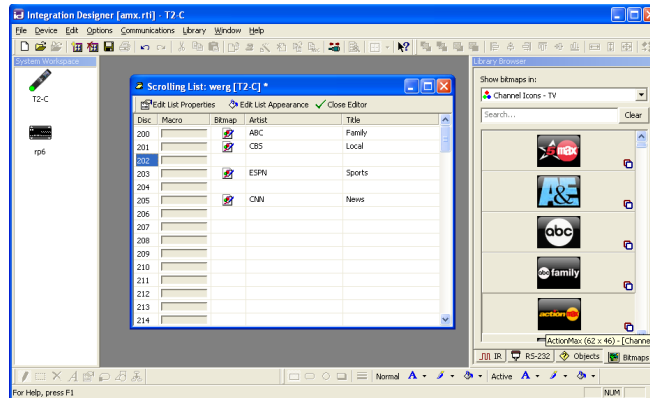
To add a bitmap to the scrolling list

- Identify the desired bitmap from the bitmap library browser
- Drag it to the appropriate row of the Scrolling List Editor table.

Left clicking once on the bitmap icon in the bitmap column will open the Bitmap Properties window, allowing you to view the normal and active image associated with a listing in the scrolling list.

To add Artist and Title information

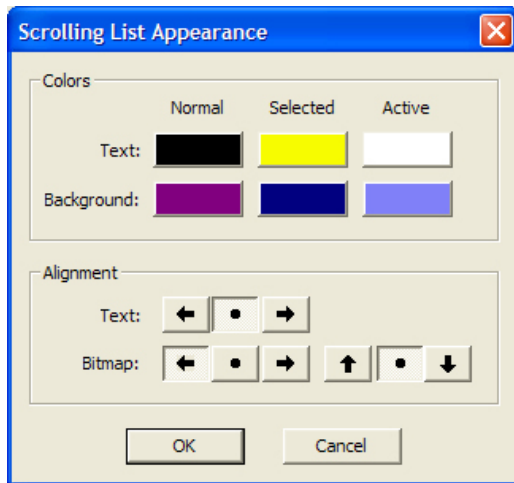
- Type in the Artist and Title information for the discs in the jukebox, or the channel names, on the appropriate rows.



Step 4: Edit the scrolling list appearance

In the Scrolling List Editor there is an option to “Edit List Appearance” (shown below, left) This selection will allow you alter the background and text of an item in the scrolling list in normal, selected, and active states.

- Click on a color bar of this window to choose virtually any color for the text and background. This window will also allow you to adjust the placement of both the text and bitmap in the scrolling list.



Step 5: Assign scrolling list navigation controls

Once finished configuring the scrolling list, use the control commands (ex: Page Up, Page Down, Select Item, etc.) located in the library browser (Objects>Scrolling List). All control of the color scrolling list must be done using the control commands located in the scrolling list section of the Objects tab. Scrolling list control commands can be placed on any button of the remote, although it is recommended to use the scroll button of the T2-C for up, down, and select control options.

- Drag and drop these commands onto any fixed hard button or LCD button.

View the Scrolling list

Upon completion the emulator feature of Integration Designer will allow you to view the completed color scrolling list (above, right). If changes need to be made, simply close the emulator, right click on the Scrolling List Object and select “Edit Scrolling List”.

Important Note:

When determining the size of the scrolling list object, be sure to take into account the size of the rows you will include in the scrolling list. In general, you will want to incrementally increase the the scrolling list object height, relative to your row height. For example, in the illustrations shown below, the row height is 50 pixels, so choosing a scrolling list object height of 280 (top illustrations) will result in the bottom row only being partially displayed. This partially displayed bottom row is also not selectable by pressing the screen. To eliminate this, choose a scrolling list object height in increments of 50 pixels. The bottom illustrations show the properties of the list adjusted to 300 pixel height for the row. The bottom row is no longer partially displayed.

