

## Creating “Please Wait” Pop-Ups

### Content

A. Overview .....	1
B. Create a “Please Wait” Layer .....	2
C. Create Activity Macros .....	5

### A. Overview

Do you use "please wait"-style pages? If the customer presses the "home" button while that page is displayed, it's possible that the app will miss the second-page change message from the processor. This can interact badly with a new feature in this version of the that allows it to remember the last displayed page and show it when restarting rather than defaulting to the home page. If this happens, when the app restarts, it will show the "please wait" page but since the macro is no longer running on the processor, it won't get a link out of that page.

There are two ways to fix this:

1. Make sure every page has some sort of button with an outgoing link (or back to the home page) - this is a good idea regardless because it's possible (although very unlikely) even in the old version that it would miss a network message and therefore end up stuck on a page.
2. Open the "Settings" app, scroll down to the "RTiPanel" section, and turn the "Remember Last Page" toggle off. This will cause the app to behave as it did in the previous version and always go back to page 1 when it is closed and reopened.

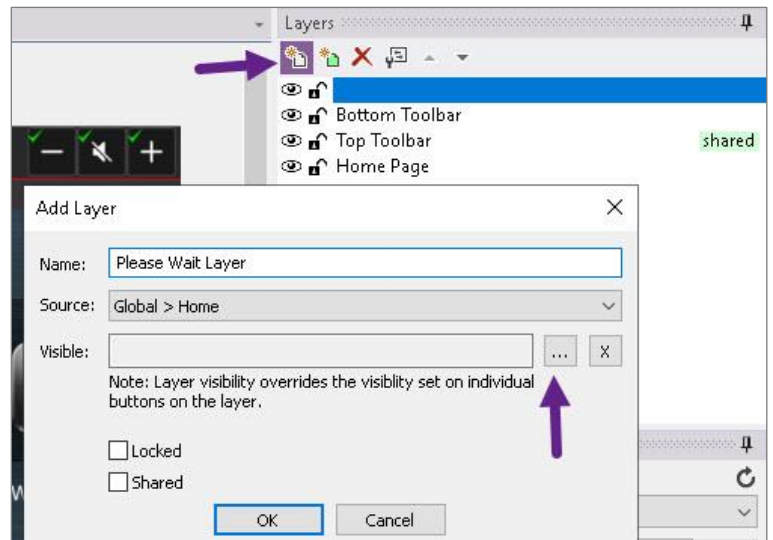
There is an alternative way to do this with a pop-up instead of jumping to another page. The process can be easily done in APEX or ID9. This technote explains how to create wait page popup in APEX.

### B. Create a “Please Wait” Layer

Here we have an interface with several activity buttons. When the client presses any of these, we want a “please wait” message to display, locking him out from pressing anything else. Let’s use the “Watch Cable” activity.

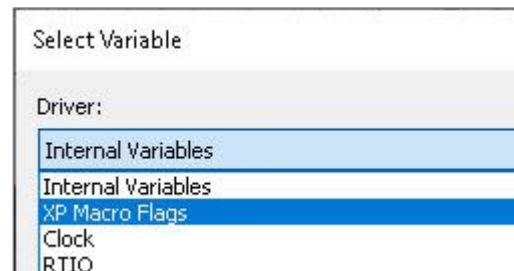


First, create a “please wait” layer by selecting the “Add new blank layer” button in the layers window. An “Add Layer” pop-up will now prompt you for your layer characteristics.



Give your layer a name. In this example, it will be named “Please Wait Layer.” Next, select the ellipsis menu next to the “Visible” field.

In the dropdown menu, select “XP Macro Flags” from the driver list.



Next, select “XP Macro Flags” from the driver list.

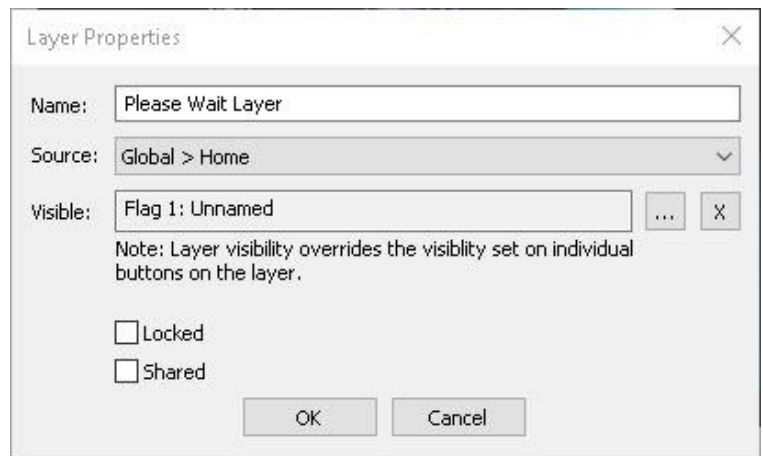
You may use any of the 256 flags available to you on the control processor. Select any available flag. We can rename it later. Click “OK” when you are done.



Your layer window should look like this example.

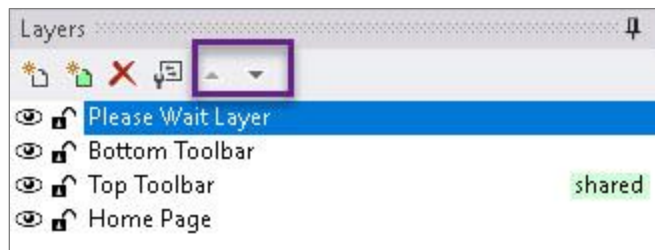
You may want to select the “Shared” option if your layer needs to appear on several pages in your interface. In this situation, we only have a home page of activities, so this is the only place where the client can select an activity.

Select “OK” to close out of the layer window.



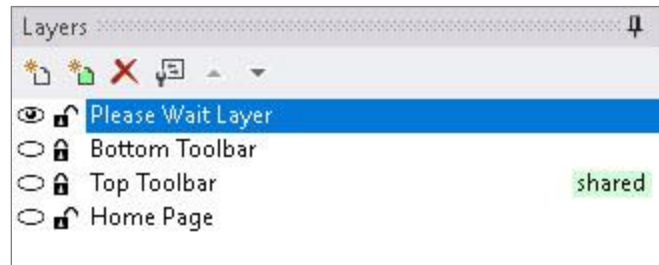
Newly created layers default to the top of the layer list. They have the highest priority, and no other layers may overlap them.

NOTE: You can always use the up and down arrows in the layer window to ensure your please wait layer is always on top or change the priority of any layer.



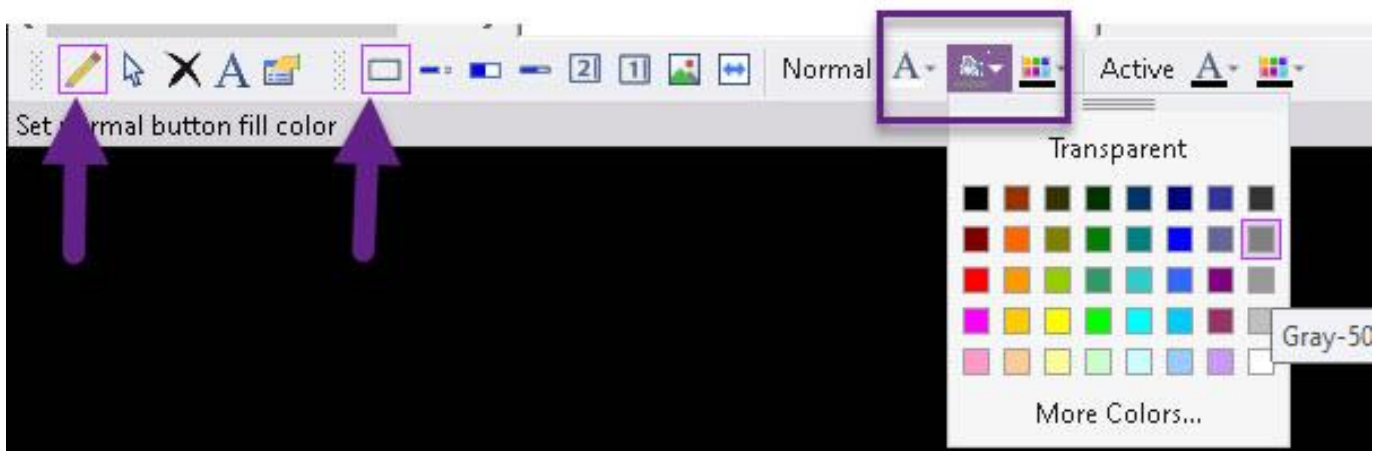
Now that a layer has been created, a pop-up message must be created on that layer.

Before you create the pop-up message on the layer you created, it is good practice to hide all the other layers, so they are not in the way.



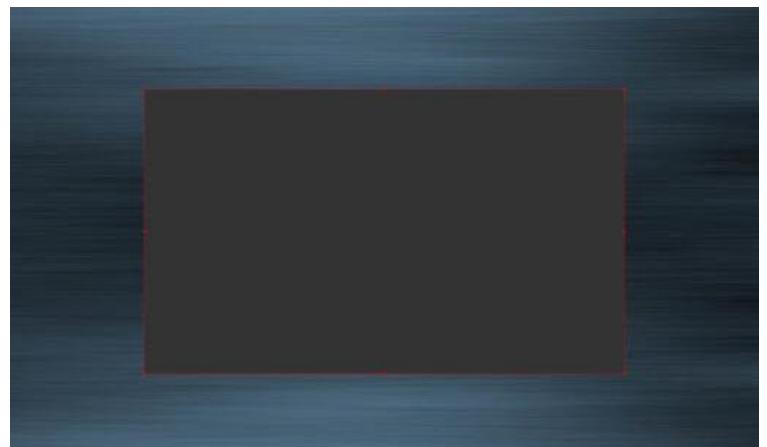
Hide all the other layers by toggling the eye icon on the left side. Make sure your layer is unlocked and that it is selected. Selected layers will be highlighted in the layer window.

Select the pencil from the selection menu then pick the rectangle shape. Pick an agreeable font and fill color from the color palette for your pop-up image.



Draw a popup on the screen in the color you selected. Center it with the alignment tools in the toolbar.

Note: You may choose to do a pop-up box or a full-page drawn on the screen. The advantage of a full-screen image is that it will prevent any buttons from being exposed on the screen.



Add some text and an icon if you wish.

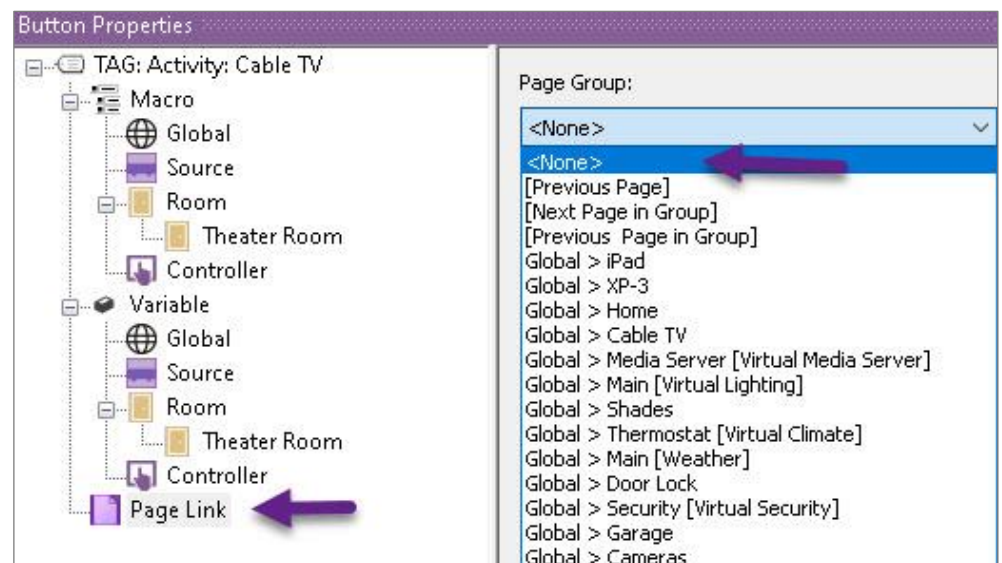
Once you finish building a “please wait” message, hide the please wait layer and expose the rest of the layers on your page. You are now ready to program activity macros which will cause the layer to display.



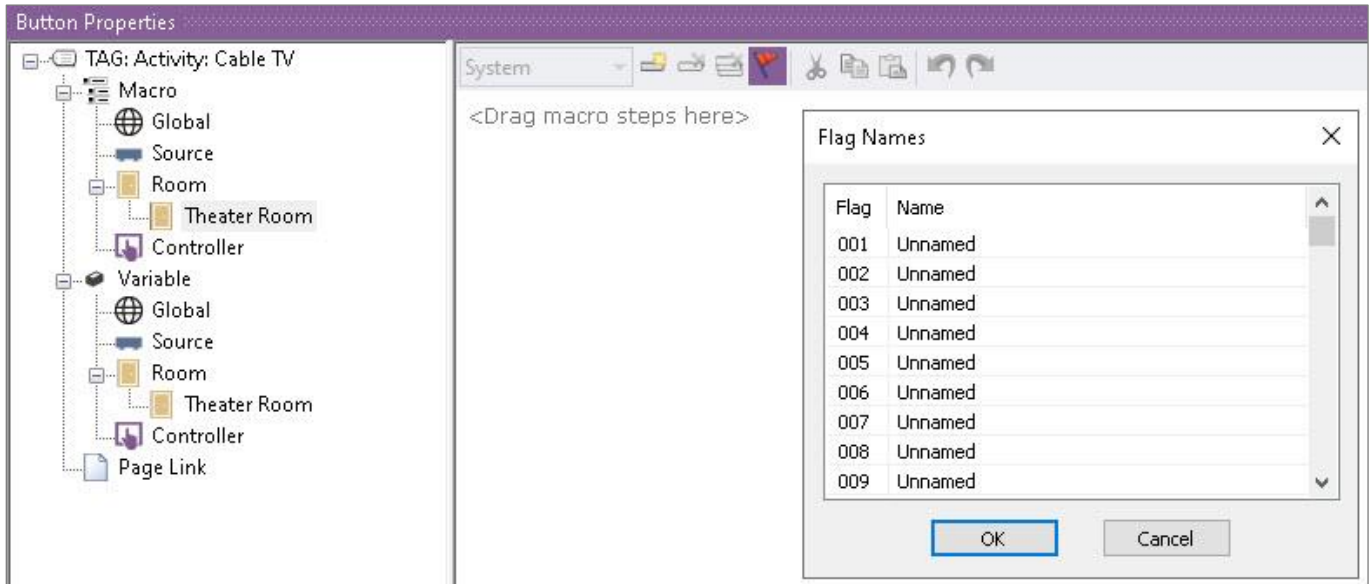
### C. Create Activity Macros

Select the button you want to program. Make sure the button contains an activity tag, and if there is an auto page jump, you must remove it.

To defeat a page link on a button, click on the page link icon in the button properties window. If there is a page link on the button, there will be a purple rectangle around the icon, and you will see the page when you select it. From the drop-down menu, scroll up and select <none>.

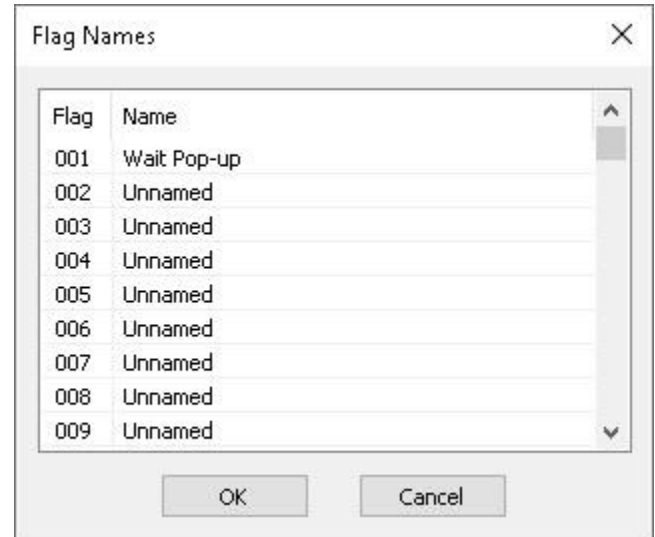


Next, select macro level you wish to run and select the red flag icon from the macro toolbar. This will allow us to name the flag we selected in the layer’s visible state properties.

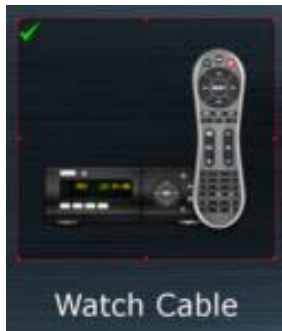


Select the flag you chose in the layer properties and give it an appropriate name.

Select the “OK” button once the flag name has been created.



Next, program your macro as you would normally.



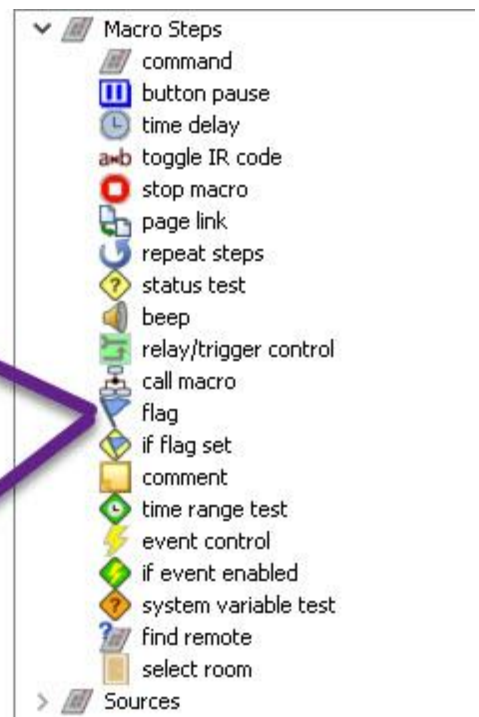
- command Television POWER ON
- command Receiver Main \ Power On
- command Cable POWER ON
- time delay 2.0
- command Receiver Main \ Select Input CBL/SAT
- command Television INPUT HDMI 1
- page link Global > Cable TV Calling Controller

In this situation, the end-user selects the activity button, and it runs and then jumps to the cable page upon completion. Let’s use the flag feature to make our please wait layer visible when the macro is running and then suppress it when the macro is completed, and the jump is made to the cable interface.

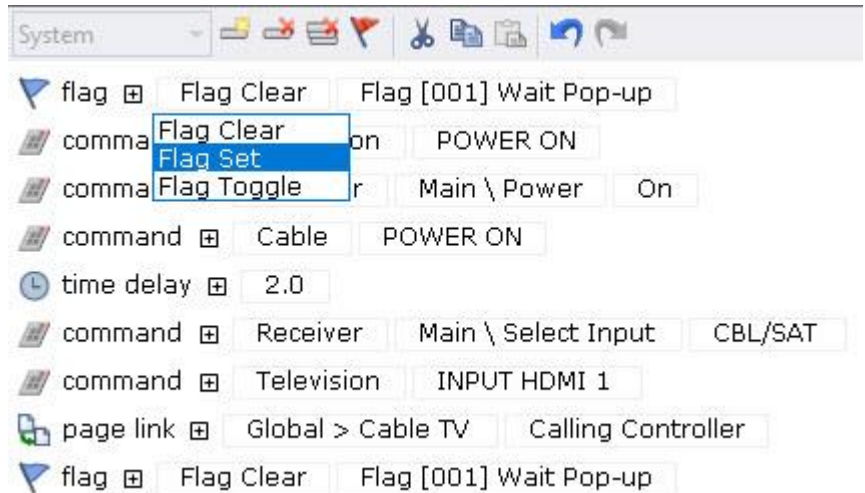
Click on the macro steps in the tabbed menu on the right side of the screen. We are looking for the “flag” option.

Drag a flag command to the top of the macro routine and one to the bottom.

- command Television POWER ON
- command Receiver Main \ Power On
- command Cable POWER ON
- time delay 2.0
- command Receiver Main \ Select Input CBL/SAT
- command Television INPUT HDMI 1
- page link Global > Cable TV Calling Controller



Select the flag option and set the flag for the first command. After the macro runs, ensure the flag is cleared on the bottom.



Result: When the end-user presses the “Watch Cable” activity button, the “Wait Pop-up” flag will be set prompting the visible state layer to display the please wait layer. After the macro completes, it will jump to the cable page and the flag will clear, suppressing the please wait layer.

With this knowledge, you can create other types of pop-ups with XP macro flags to trigger user menus, messages, and other information.