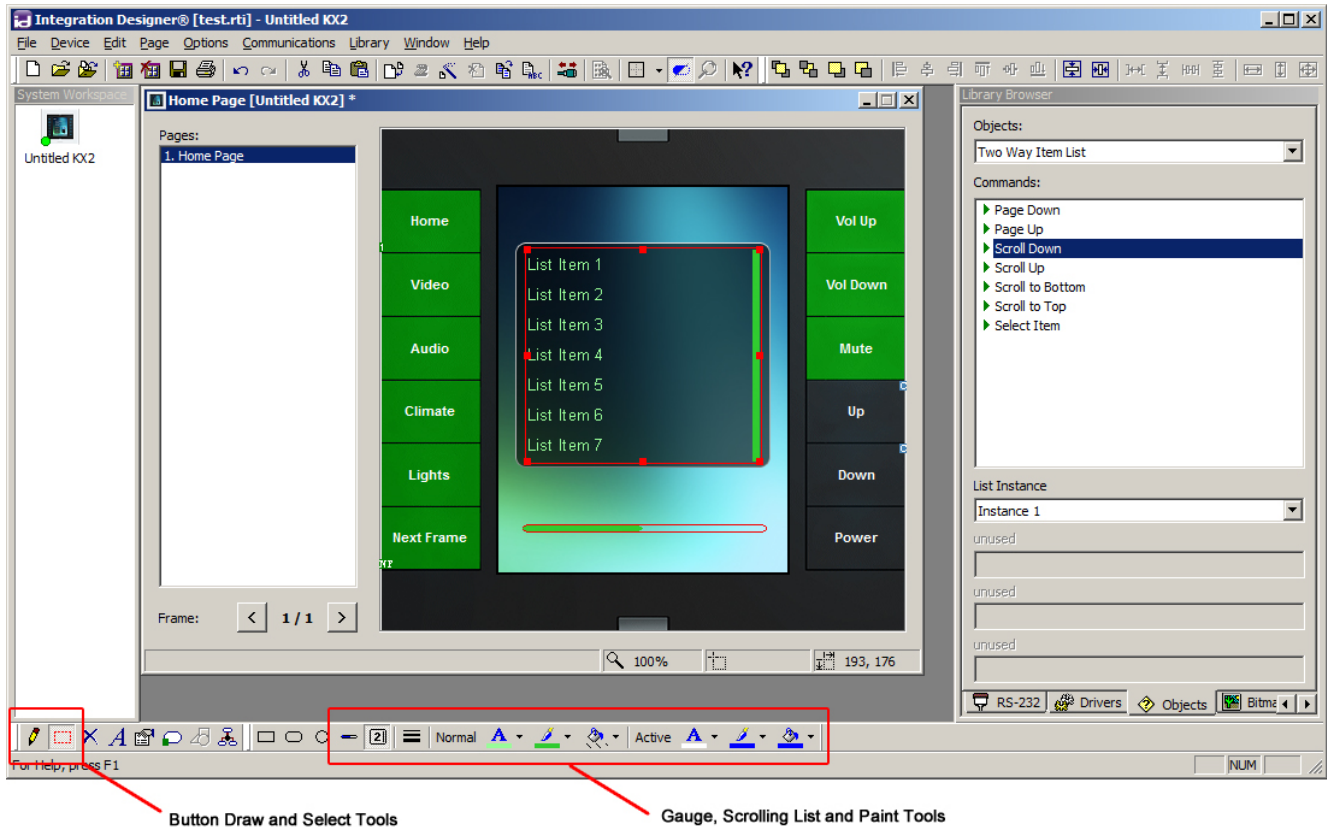


## T2i/KX2 Scrolling List and Gauge Programming



### Programming the two-way item list and gauge on a T2i/KX2

The two-way item list and gauge are “drawn” on to the screen similar to the RTiPanel app.

#### Important Notes:

- Requires Integration Designer 9.3 (for KX2) or Integration Designer 9.4 (for T2i) or higher.
- KX2 requires firmware version 01.10 or higher to be installed.
- When stacking buttons, such as an item list background, the “bottom” button must be set to inactive in the button properties.

#### Gauge Drawing Tool

To add a gauge object to a page, select the ‘Gauge Object’ tool located on the toolbar at the bottom of the Integration Designer window. Now select the ‘Draw Button’ tool. Draw the gauge on the page to the desired size. The orientation of the gauge will change depending on the size of the button. To make the gauge orientation bottom-to-top, simply draw the button tall and skinny.

#### Installation Notes:

- Gauge objects are for feedback only. You cannot place a command onto the gauge object.
- The line color and fill color are adjustable using the “Normal” paint tools.
- Gauge thickness is not adjustable

## Two-Way List Drawing Tool

To add a Two Way List to a page, select the two-way 'Scrolling List Object' object tool located on the toolbar at the bottom of the Integration Designer window. Now select the 'Draw Button' tool. Draw the scrolling list object on the page to the desired size. Once created, driver commands and item list feedback variables can be assigned to the list for two-way communication with compatible equipment.

### Installation Notes:

- If 'Highlighting' is enabled – set the "Active" color of the font to display the "highlighted" item. There is no semi-transparent white box highlighting the "current" item as is used with other RTI devices.
- The scrolling list on the T2i/KX2 does not support text wrapping.
- Button text properties (text size, font, alignment) can be adjusted by right clicking on the two-way list button, and selecting "Edit Properties".
- The scrolling list, scroll bar and font colors can be adjusted using the paint tools.
- To adjust the scrolling list scroll bar thickness, use the 'Line Width' tool.
- Only one scrolling list is allowed per frame.
- You can use the 'Two-way Item List' object commands in the Library Browser for Scroll up, Scroll Down, Page Up, Page Down etc. Since there is only one item list per frame allowed, the "List Instance" will always be "Instance 1".