

## How to Use the RTI IP/RS232 Driver for Sony 4K Projectors

### Content

A. Overview .....	1
B. Access the Projector's Setup Page .....	1
C. IP Address.....	2
D. Network Management & Remote Start .....	2
E. Advanced Display Control Protocol.....	3

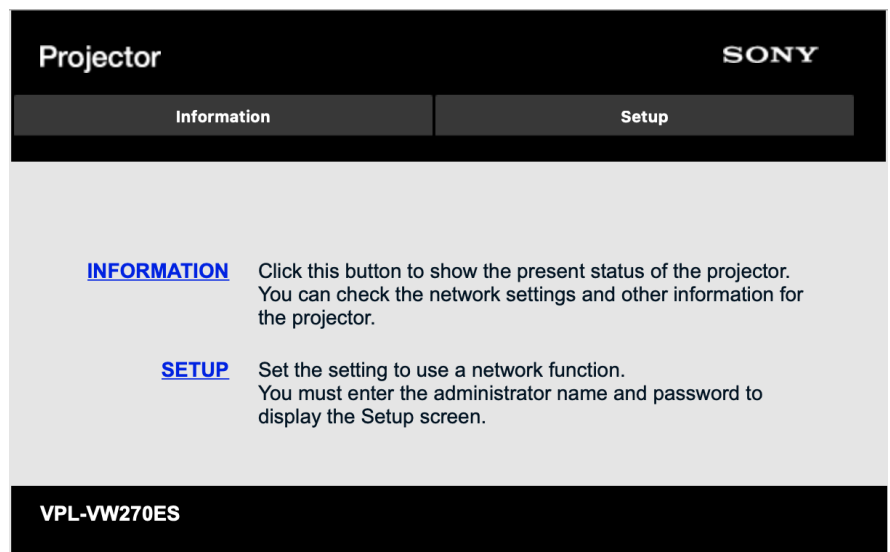
### A. Overview

This document is intended to give further details on how to connect the [RTI driver](#) to the new generation of Sony 4K projectors.

### B. Access the Projector's Setup Page

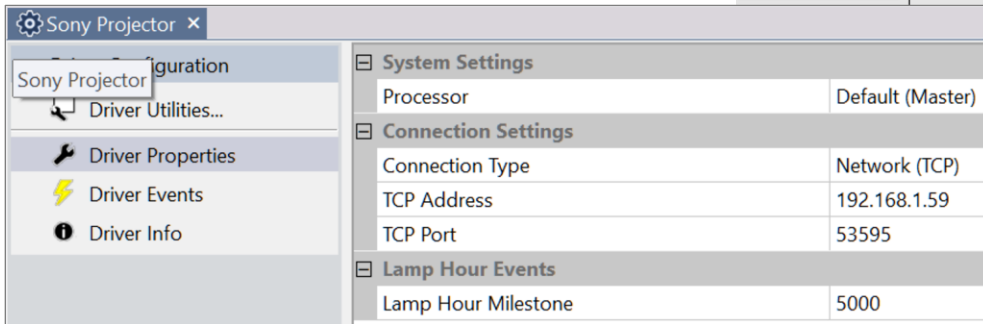
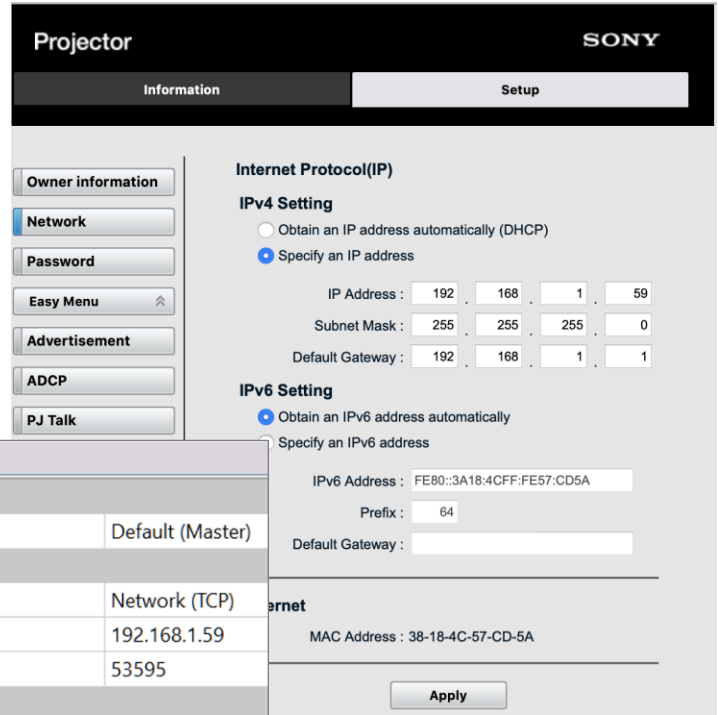
In addition to the projector's on screen menu Sony projectors provide a web interface that can be accessed using any web browser.

To access the setup page enter the projector's IP address in your web browser and when prompted for the first authentication access, enter the username "root" and password "Projector".



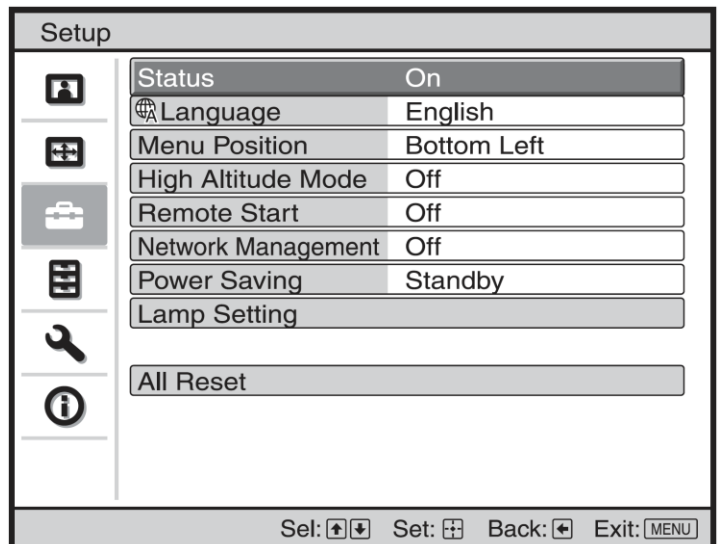
### C. IP Address

Make sure the IP address of the projector matches what you have specified in the driver config.



### D. Network Management & Remote Start

Both Network Management & Remote Start need to be set to On to allow the RTI driver to communicate with the projector. When Network Management is set to "On" the Remote Start will be set to "On" automatically. This setting can't be changed.



### E. Advanced Display Control Protocol

ADCP is a protocol for controlling a Sony projector from a remote location through serial and network connections, using the default port 53595. If you decide to change this default port number please ensure to also update the “TCP Port” field in the driver config. Make sure that the “ADCP Service” is checked.

The driver will not work with an encrypted connection which is the default setting of the Sony projector. Please ensure to uncheck the setting “Requires Authentication”.

