

## How to Use an SD Memory Card with the XP-8s or XP-8v

### Contents

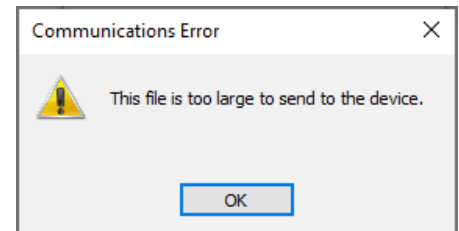
A. Overview .....	1
B. When do you need additional memory? .....	1
C. SD Card Specifications .....	2
D. How to check the SD Card memory of the XP-8v.....	2
E. How to fix SD Card Issues on a XP-8s .....	2

### A. Overview

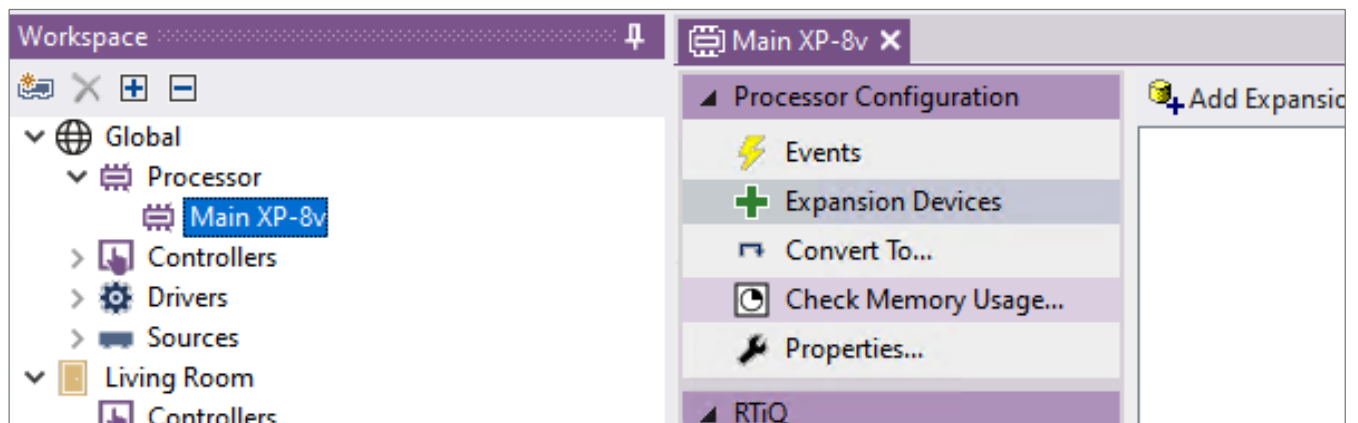
Learn how to use an SD Memory Card with an XP-8s or XP-8v control processor, how to check the processor’s memory usage and what the required memory card specifications are.

### B. When do you need additional memory?

Both processors the XP-8s and the XP-8v come with 512 MB of non-volatile flash memory that provides enough memory for most projects. However, sometimes the complexity of your programming requires more memory. When you try to upload such a program file to the processor XP-8v or XP-8s respond with a memory alert.



You can also check the memory usage of the processor in RTI’s Integration Designer software:



### C. SD Card Specifications

There are different SD card standards depending on the storage capacity SDSC, SDHC, SDXC, SDUC. Since the XP-8v / XP-8s SD card slot is SDHC compliant we recommend using a **Secure Digital High Capacity** card.

1. SDHC cards must be FAT32 formatted in order to work properly with an RTI processor.
2. We recommend a 8GB SDHC card.
3. The XP-8v card slot has been tested with SDHC cards up to 32GB.
4. The XP-8s can read/write up to 16GB.

A higher capacity card with up to 32GB can be used, but the processor might not be able to use the additional memory over 8GB.

### D. How to check the SD Card memory of the XP-8v

It's necessary to restart the processor after inserting or removing the SD card to receive the correct free and total storage. Use the XP-8v's front panel buttons to navigate in the front panel display menu to show the memory card information:

1. Press Menu
2. Status
3. Storage
4. Ext Flash Storage

If the SD card is available in the card slot and is able to be read, the XP-8v will display the internal storage and the card storage in line 2: "SDCard0 Free: xxGB".



External Flash Storage  
Other0 Free: 299.98MB Total: 449.00MB  
SDCard0 Free: 6.90GB Total: 7.51GB

If the display shows only the first line "Other0 Free: xxMB" there is either no card inserted, or the card can't be read or it is corrupted.



External Flash Storage  
Other0 Free: 299.98MB Total: 449.00MB

### E. How to fix SD Card Issues on an XP-8s

1. Remove the SD card from the XP-8s' card slot.
2. Re-format the SD card with FAT32 using a computer.
3. Insert the SD card back into the XP-8s' card slot.
4. Send a blank project file with just an XP-8s added to the processor via USB.
5. Re-upload the project to the XP-8s.