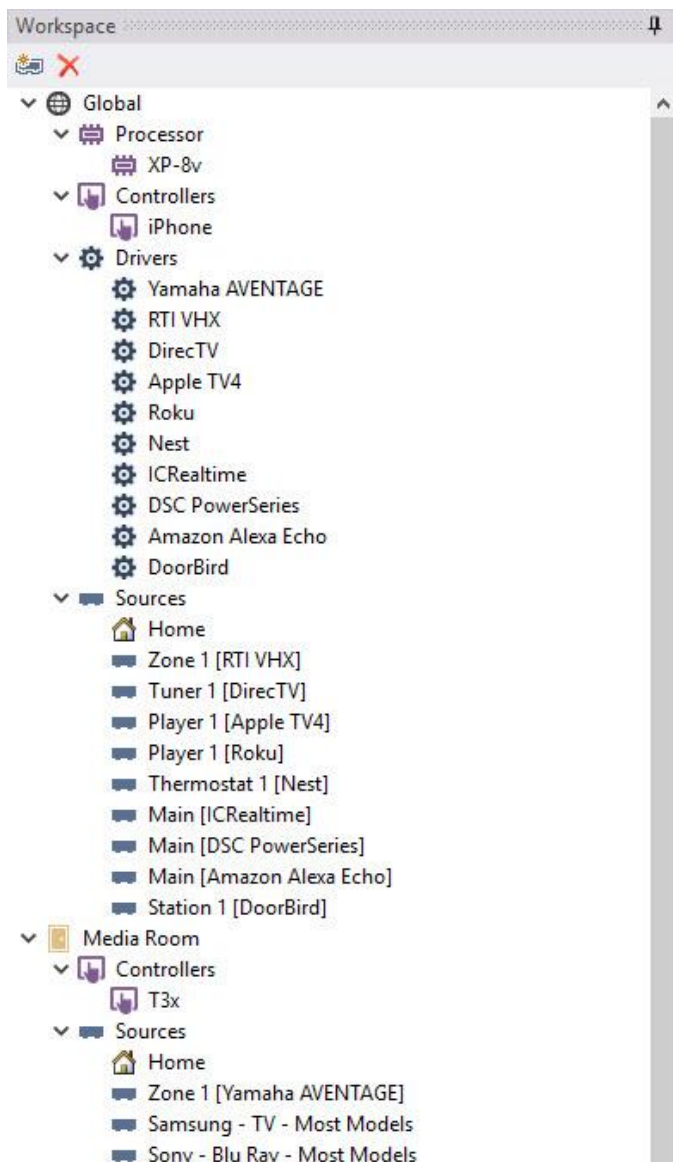


Integration Designer APEX vs. ID9.x

PROGRAMMING TREE STRUCTURE

APEX has an organized approach complete with a system tree structure that is easy to build and reference as you build the project. One look at the programming tree and it's easy to understand the system and how it operates.



AUTO-PROGRAMMING

Thanks to RTI's new tagging feature, APEX auto-programs commands and meta-data to make programming easier. No need to drag and drop IR, RS-232 or driver commands!



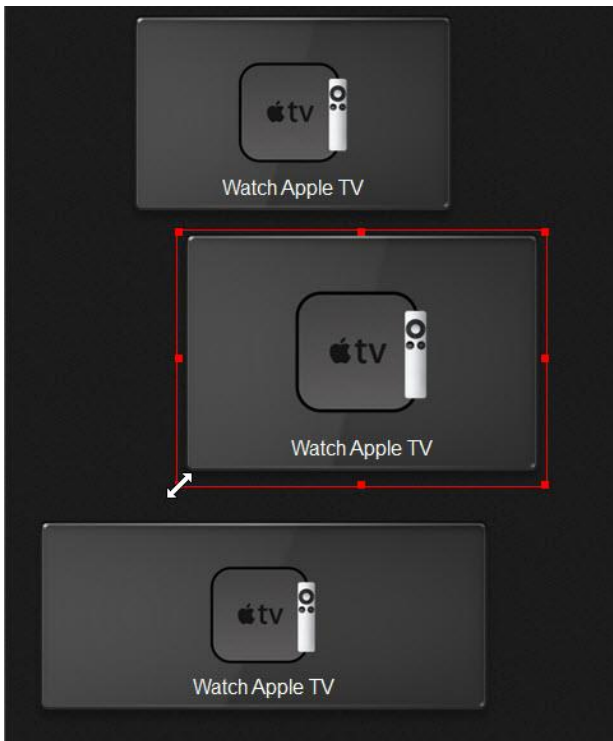
PROGRAMMING & MAINTAINENCE SIMPLIFIED

RTI's tags and macro level advantages don't end with auto-programming. Make a change in one place instead of on every single controller! Corrections and additions are easy!

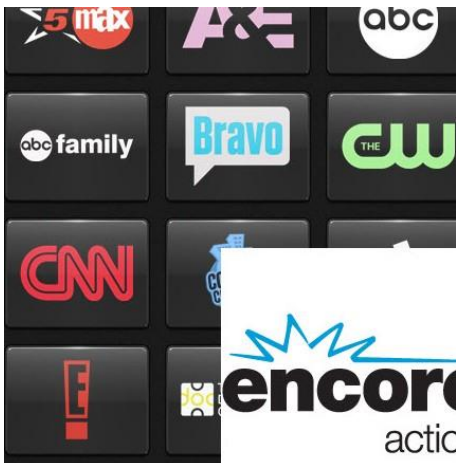


SCALABLE GRAPHICS

Simply grab and stretch any bitmap or framework in APEX and re-size it to the resolution you like without distorting the graphics! Graphics have been revolutionized in APEX and eliminate the need to have extensive graphic libraries for every available resolution.



It doesn't end there. Not only can bitmaps be embedded into other bitmaps, but channel icons gain transparency and if necessary, invert the color status to contrast the button!



PROCESSOR EVENTS

Processor events are now separated from driver events, allowing the programmer to develop sense, periodic, daily, or startup events, triggering powerful, automated routines.

Daily Event Details

☐ 1:32 AM

☒ 10 minutes before sunset

☐ Sunday ☐ Monday ☐ Tuesday ☐ Wednesday

☐ Thursday ☒ Friday ☐ Saturday

Macro to Run

Room: Den

Source: <Room Macro - No Source>

Macro: Run Shabbat Shade Routine

OK Cancel

DRIVER EVENTS

Driver events are nothing new, but now you can see an overhead view of all your event options simply by selecting the driver. Create events based on the status of two-way devices and get your customers excited about true automation.

Enable	Category	Event	Has Macro
<input checked="" type="checkbox"/>	Power	Main Zone On	No
<input checked="" type="checkbox"/>	Power	Main Zone Off	Yes
<input type="checkbox"/>	Power	Zone 2 On	No
<input type="checkbox"/>	Power	Zone 2 Off	No
<input type="checkbox"/>	Power	Zone 3 On	No
<input type="checkbox"/>	Power	Zone 3 Off	No
<input type="checkbox"/>	Power	Zone 4 On	No
<input type="checkbox"/>	Power	Zone 4 Off	No
<input type="checkbox"/>	Mute	Main Zone On	No
<input type="checkbox"/>	Mute	Main Zone Off	No
<input type="checkbox"/>	Mute	Zone 2 On	No
<input type="checkbox"/>	Mute	Zone 2 Off	No
<input type="checkbox"/>	Mute	Zone 3 On	No
<input type="checkbox"/>	Mute	Zone 3 Off	No
<input type="checkbox"/>	Mute	Zone 4 On	No
<input type="checkbox"/>	Mute	Zone 4 Off	No
<input type="checkbox"/>	Input Change	Main Zone	No
<input type="checkbox"/>	Input Change	Zone 2	No
<input type="checkbox"/>	Input Change	Zone 3	No
<input type="checkbox"/>	Input Change	Zone 4	No
<input type="checkbox"/>	Party Mode	Party Mode On	No
<input type="checkbox"/>	Party Mode	Party Mode Off	No

System command Sonos Transport Functions \ Pause Den Sonos (1)

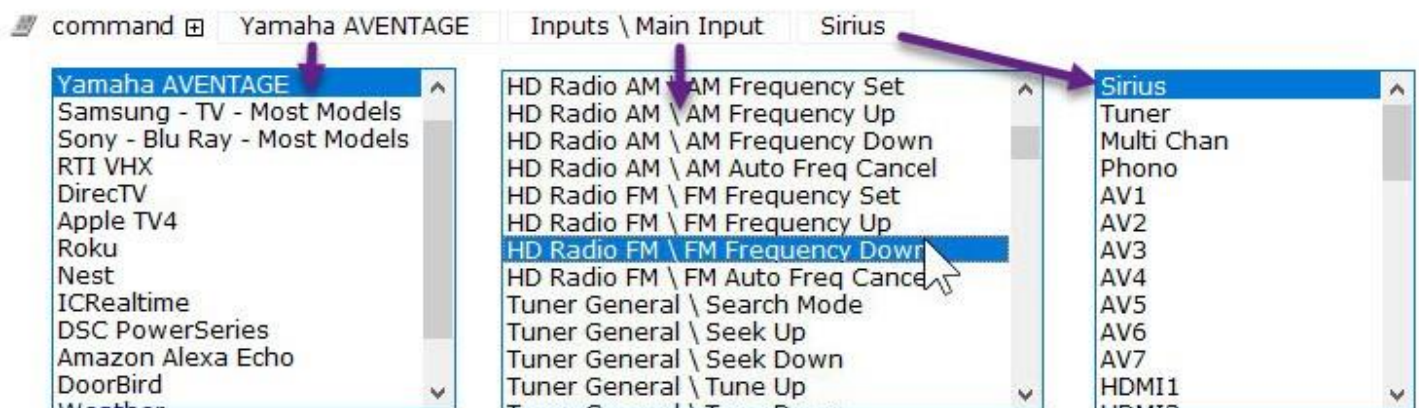
APEX OPTIMIZED DRIVERS

Once a driver has been optimized for APEX it will bring several advantages. Some drivers are split into various functions, improving overall efficiency for RTI hardware and the programmer. Other features allow for a custom-built interface, populated with command functionality and feedback, allowing APEX optimized drivers to improve efficiency.

Rooms	Controllers	Drivers	ZWave	Infrared	RS-232	Pagesets	Bundles
Library:							
Search: yamaha aventage							
Name	Source	Manufacturer	Model	Version			
Yamaha AVENTAGE	Zone <Next Item>	Yamaha	AVENTAGE	1.53			
Yamaha AVENTAGE	HD Radio	Yamaha	AVENTAGE	1.53			
Yamaha AVENTAGE	Tuner	Yamaha	AVENTAGE	1.53			
Yamaha AVENTAGE	Sirius Radio	Yamaha	AVENTAGE	1.53			
Yamaha AVENTAGE	iPod	Yamaha	AVENTAGE	1.53			
Yamaha AVENTAGE	iPod USB	Yamaha	AVENTAGE	1.53			
Yamaha AVENTAGE	AirPlay	Yamaha	AVENTAGE	1.53			
Yamaha AVENTAGE	Spotify	Yamaha	AVENTAGE	1.53			
Yamaha AVENTAGE	Server	Yamaha	AVENTAGE	1.53			
Yamaha AVENTAGE	Bluetooth	Yamaha	AVENTAGE	1.53			
Yamaha AVENTAGE	USB	Yamaha	AVENTAGE	1.53			
Yamaha AVENTAGE	Net Radio	Yamaha	AVENTAGE	1.53			
Yamaha AVENTAGE	PC	Yamaha	AVENTAGE	1.53			
Yamaha AVENTAGE	Rhapsody	Yamaha	AVENTAGE	1.53			
Yamaha AVENTAGE	Napster	Yamaha	AVENTAGE	1.53			
Yamaha AVENTAGE	Pandora	Yamaha	AVENTAGE	1.53			
Yamaha AVENTAGE	Sirius Internet Radio	Yamaha	AVENTAGE	1.53			
Yamaha AVENTAGE	SiriusXM	Yamaha	AVENTAGE	1.53			

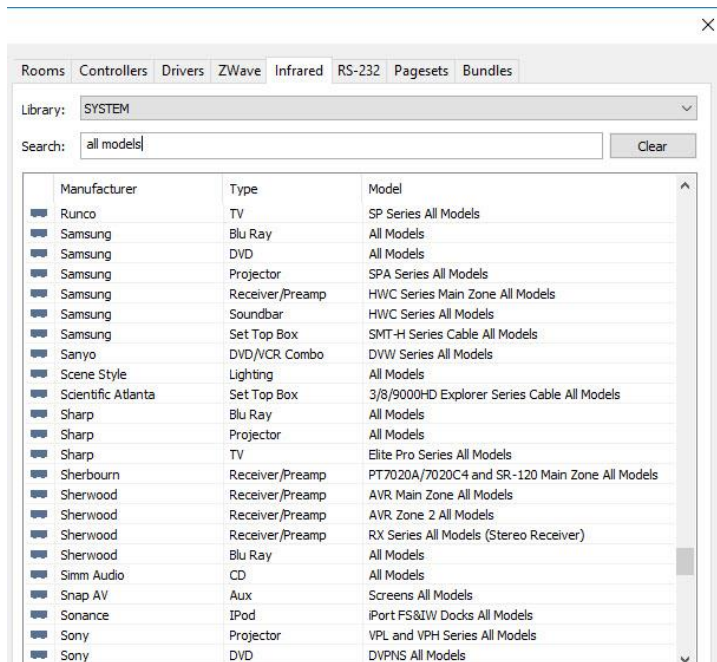
BUILD MACROS WITH EASE

Once a command is selected or dragged to the macro window, any section of that command can easily be changed. You have full access to the devices and all the command structure, making the process of building and changing macros easier.

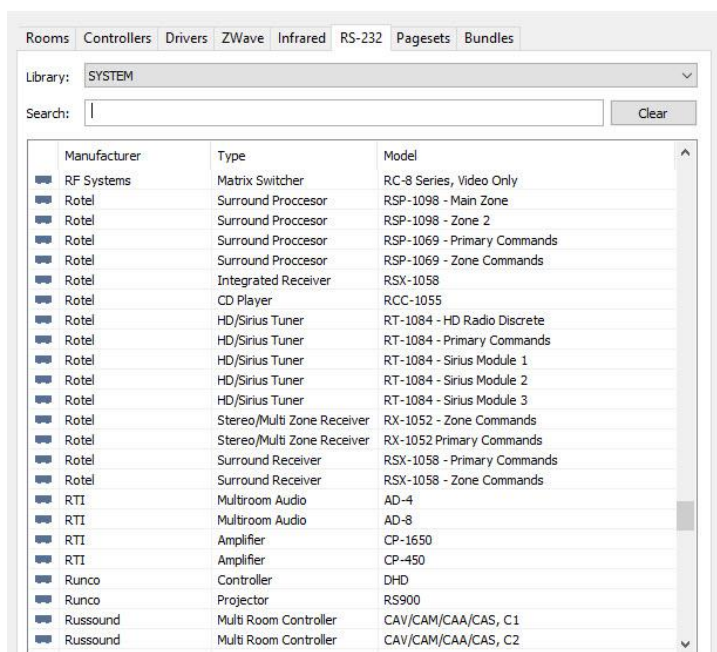


LICENSED IR & SERIAL LIBRARIES

APEX IR and RS-232 libraries are now consolidated, comprehensive and accurate. All the commands all utilize the same naming convention for functions, making it incredibly easier and more efficient for programmers.



Manufacturer	Type	Model
Runco	TV	SP Series All Models
Samsung	Blu Ray	All Models
Samsung	DVD	All Models
Samsung	Projector	SPA Series All Models
Samsung	Receiver/Preamp	HWC Series Main Zone All Models
Samsung	Soundbar	HWC Series All Models
Samsung	Set Top Box	SMT-H Series Cable All Models
Sanyo	DVD/VCR Combo	DVW Series All Models
Scene Style	Lighting	All Models
Scientific Atlanta	Set Top Box	3/8/9000HD Explorer Series Cable All Models
Sharp	Blu Ray	All Models
Sharp	Projector	All Models
Sharp	TV	Elite Pro Series All Models
Sherbourn	Receiver/Preamp	PT7020A/7020C4 and SR-120 Main Zone All Models
Sherwood	Receiver/Preamp	AVR Main Zone All Models
Sherwood	Receiver/Preamp	AVR Zone 2 All Models
Sherwood	Receiver/Preamp	RX Series All Models (Stereo Receiver)
Sherwood	Blu Ray	All Models
Simm Audio	CD	All Models
Snap AV	Aux	Screens All Models
Sonance	iPod	iPort FS&IW Docks All Models
Sony	Projector	VPL and VPH Series All Models
Sony	DVD	DVPNS All Models



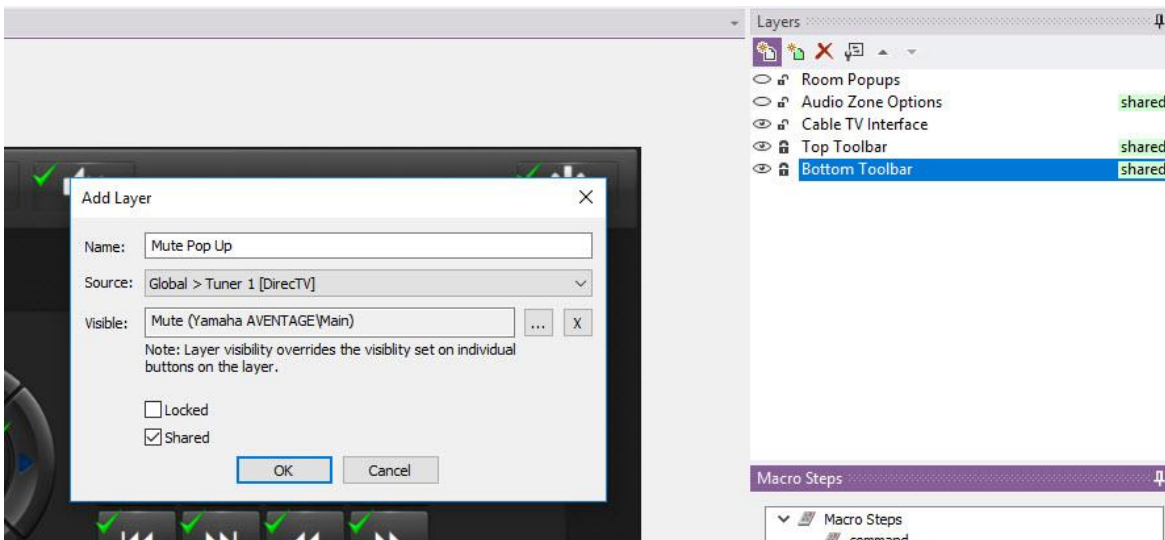
Manufacturer	Type	Model
RF Systems	Matrix Switcher	RC-8 Series, Video Only
Rotel	Surround Processor	RSP-1098 - Main Zone
Rotel	Surround Processor	RSP-1098 - Zone 2
Rotel	Surround Processor	RSP-1069 - Primary Commands
Rotel	Surround Processor	RSP-1069 - Zone Commands
Rotel	Integrated Receiver	RSX-1058
Rotel	CD Player	RCC-1055
Rotel	HD/Sirius Tuner	RT-1084 - HD Radio Discrete
Rotel	HD/Sirius Tuner	RT-1084 - Primary Commands
Rotel	HD/Sirius Tuner	RT-1084 - Sirius Module 1
Rotel	HD/Sirius Tuner	RT-1084 - Sirius Module 2
Rotel	HD/Sirius Tuner	RT-1084 - Sirius Module 3
Rotel	Stereo/Multi Zone Receiver	RX-1052 - Zone Commands
Rotel	Stereo/Multi Zone Receiver	RX-1052 Primary Commands
Rotel	Surround Receiver	RSX-1058 - Primary Commands
Rotel	Surround Receiver	RSX-1058 - Zone Commands
RTI	Multroom Audio	AD-4
RTI	Multroom Audio	AD-8
RTI	Amplifier	CP-1650
RTI	Amplifier	CP-450
Runco	Controller	DHD
Runco	Projector	RS900
Russound	Multi Room Controller	CAV/CAM/CAA/CAS, C1
Russound	Multi Room Controller	CAV/CAM/CAA/CAS, C2

LAYERS

Layers have been a popular request for RTI dealers and now they are here. Layers allow you to build and manage powerful interfaces with ease. You can build sub-menus, pop-up alerts and menus, scrolling lists, headers, and footers separately, without affecting other areas of the interface. Layers are easy to manage and allow the programmer to create a better experience for the end-user.

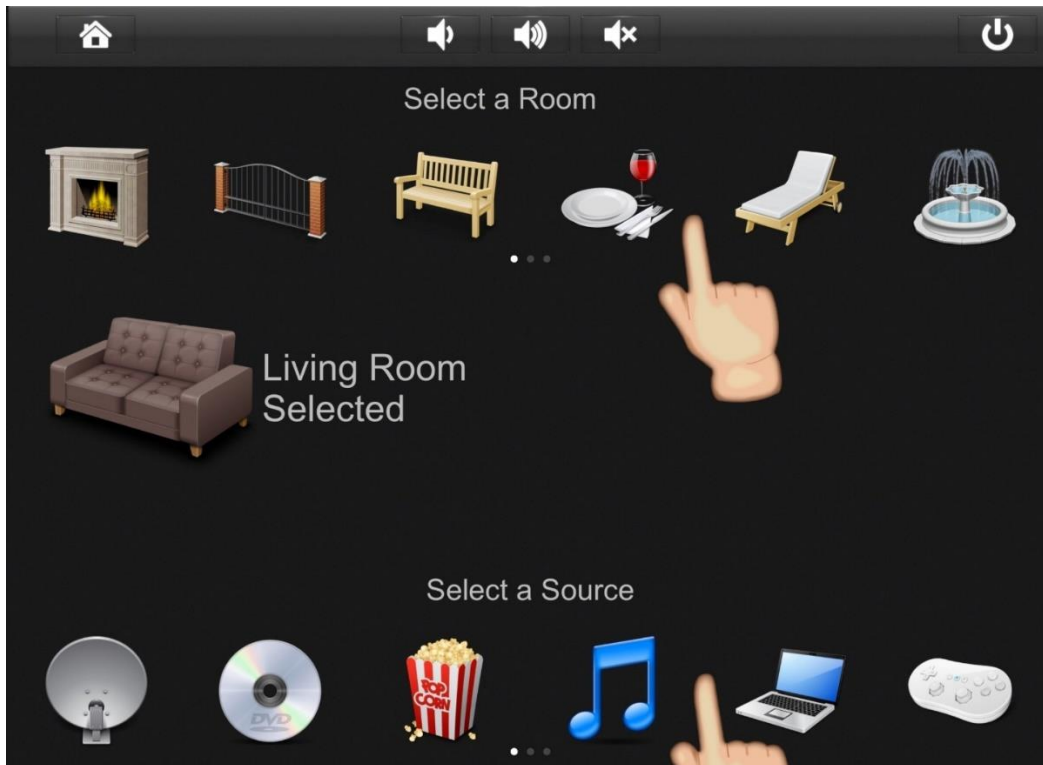
SHARED LAYERS

Shared layers allow you design portions of a page, like popups and toolbars, once and then use them on multiple pages. Any edits you make to the shared layer are automatically reflected on every page that includes them.



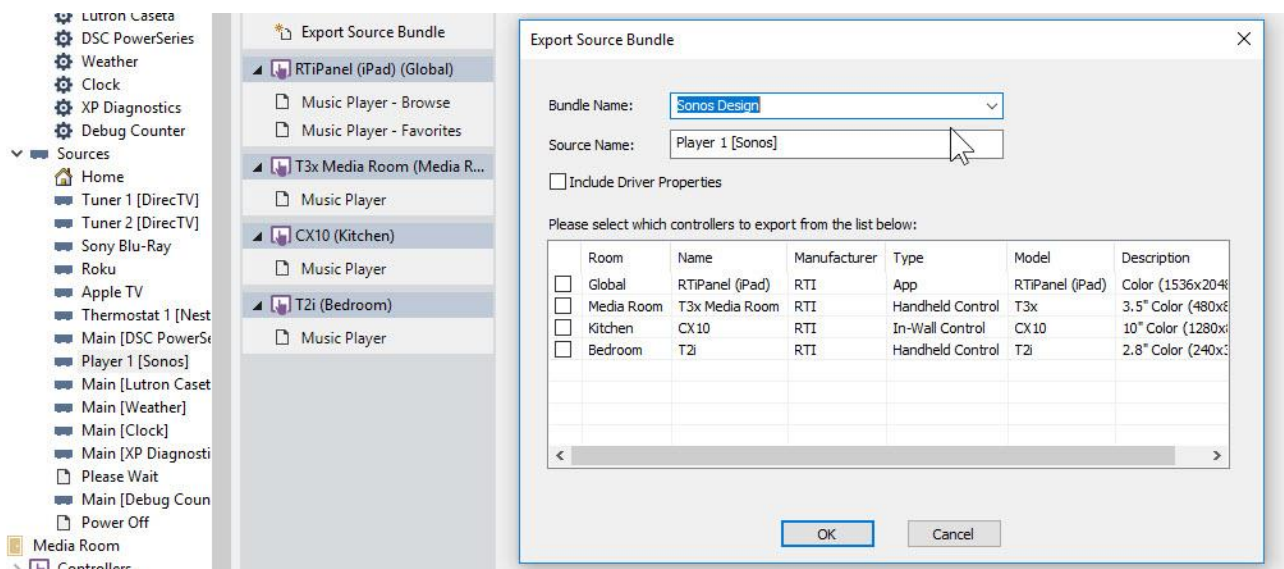
VIEWPORTS

Viewports give RTiPanel devices the ability to create a horizontal scrolling list. You can swipe through this list without impacting any other graphics on the page. Viewports are a powerful feature that adds versatility to any RTiPanel device and can be built into the powerful layers feature, allowing the programmer to maximize screen real estate.



EXPORTING AND IMPORTING BUNDLES

Once an interface is fully developed and perfected by the programmer, that device can be exported to a Bundle which includes all programming for that device, including the screens, IR codes, macros, and drivers. The Bundle can then be imported into the same or future projects. Bundles allow you to build a device library that contains a graphical user interface with functionality that you can repeatedly use in all your projects.



SWAPPING LIBRARIES SEAMLESSLY

One of the most unique and convenient features of APEX is the ability to swap drivers with IR libraries, IR libraries with drivers, serial devices with drivers or IR, or any other combination. Thanks to tags and the powerful swap features, system maintenance is a breeze.



ROOM PROXY

A built-in room selection feature that tracks a current room selection and dynamically changes the macros on-screen to point to that room. In addition, the programmer can base powerful if/then/else logic on the current room selected, providing an efficient way to program without the need to create multiple device pages for shared sources.



SWAPPING TEMPLATES & GUI

If you think swapping devices is easy, try swapping out a user interface. Dealers can create their own graphics or use third party templates which can easily be swapped out to replace existing UI. RTI gives you the ability to switch one UI for another while preserving the commands and structure. Give your interfaces a quick makeover without the work involved.



BEFORE



AFTER

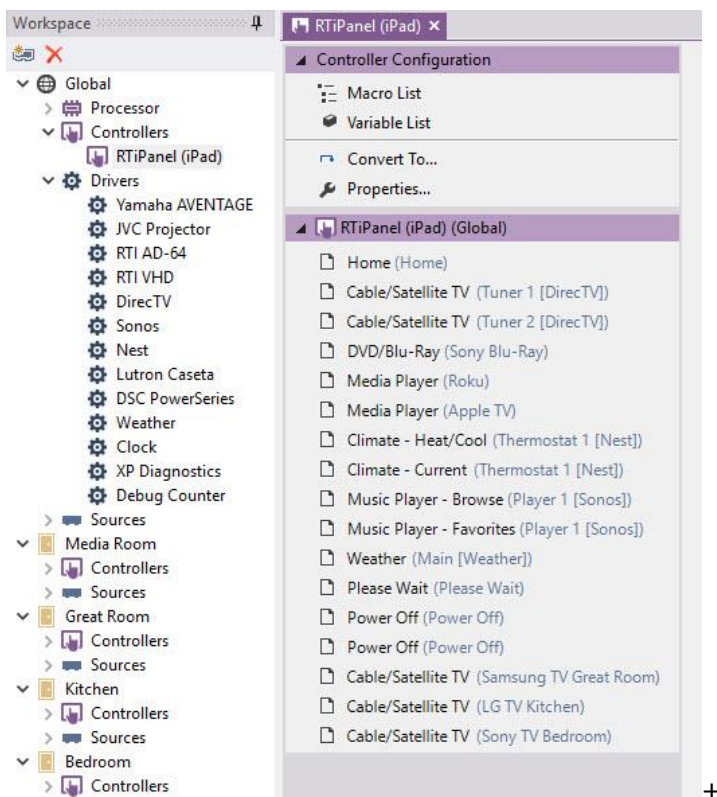
NEW MACRO COMMAND FEATURES

To accelerate the programming process for devices using IR codes, you can now set a default value for the minimum repeats, repeat while the button is pressed, and the .3 second delay setting for all IR codes in a device.



PAGE MANAGEMENT

Simply click on any controller, and all pages display in a single list allowing you to access and modify any page on your device from one place.



There are many other enhancements and features that make APEX a better choice for building larger system files. Contact us today for training opportunities!