



Key Features

- Models available in either 433MHz RF or 2.4GHz RF (utilizing Zigbee® technology).
- Two-way feedback from compatible devices available on 2.4GHz (Zigbee®) model.
- Ergonomic design permits effortless operation.
- Full color TFT LCD to display custom buttons, text and graphics.
- Integrated 802.11 WiFi.
- Integrated high-resolution touchscreen.
- Powerful 32-bit, 400Mhz Xscale® processor.
- 32MByte of Flash Memory.
- Tilt switch can automatically turn on the backlight when picked up.
- Extremely bright, backlit display and keys with adjustable brightness.
- Stereo speakers for custom sounds
- Thirteen assignable/programmable keys.
- Transmits IR and RF (or both - on a single button press!).
- System includes a Lithium-Polymer battery and docking station.
- Completely customizable and programmable.
- Extremely wide IR transmitting frequency range.
- Non-volatile Flash memory stores your system configuration even when power is not present.
- Field upgradable firmware.
- USB and Ethernet programming.

T4 Universal Controller

The T4 is RTI's flagship wireless controller - a culmination of many years of engineering and design experience. It provides the ideal solution for those who require the very best in wireless touchpanel control. Sleek and sophisticated, the T4 is the perfect compliment to today's flat panel televisions and high-end home theaters. The highly stylized design, user-friendly ergonomics, and intuitive operation all work together to provide the richest possible experience.

The T4 provides a self-contained control system for controlling audio/video components, lights, and other electronic systems in the home. It also displays wireless video (motion JPEG) and web pages - either full screen or in an adjustable window. With a TFT LCD, full VGA resolution, powerful 400MHz 32-bit MCU, 32MB of Flash memory, stereo speakers, and an expandable architecture. With the addition of a 2.4GHz (Zigbee®-enabled) model and the ability to view two-way feedback* from compatible devices such as music servers or lighting control, the T4 defines the state-of-the-art in touchpanel control.

Description

When it comes to control, the T4 has it all - direct IR control for stand-alone operation, RF output for control processor operation, WiFi for IP control and internet access. The T4 design maintains the perfect balance between display size and resolution. At 6.4 inches the LCD is small enough to be a truly hand-held device, yet it provides the full VGA resolution necessary for displaying video windows and web pages. The T4 interface is fully programmable using RTI's Integration Designer® software, making it easy to display custom buttons, text, graphics, and animations.

In addition to the limitless software customization, the T4 provides amazing hardware flexibility. Additional RTI accessory devices provide the T4 with power sensing for reliable operation, and two-way RS-232 communications* for advanced control.

Call 952-253-3100

www.rticorp.com

Specifications

Power.....	7.2VDC 4000 mAh Lithium-Polymer Battery Pack
Power Management.....	Automatic On/Off (tilt switch)
Infrared Control.....	Range 30 feet (9.1 meters) @ 60 degrees
Infrared Frequency Range.....	15 KHz - 460 KHz
Radio Frequency Control Range.....	Up to 100 feet (30.5 meters)
Radio Frequency Carrier.....	433 MHz
Touchscreen Display.....	High-brightness color TFT LCD
.....	Full VGA (640x480 pixels) with 65K colors
.....	300:1 contrast ratio
.....	Integrated high-resolution touchscreen
Display Size.....	6.4 in (162mm) diagonal
Backlight.....	Dual CCFL, 300nit (Display)
.....	Blue LED (Keypads)
Operating Temperature.....	+32°F to +122°F (0°C to +50°C)
Operating Humidity.....	5% to 95% Non-condensing
Total System Memory.....	32M Bytes Flash (non-volatile) memory
Device Capability.....	Total number of devices is limited only by memory
Macro Capability.....	Unlimited steps in a single macro
.....	Total number of macros is limited only by memory
.....	Macro capability on every button
Communications.....	USB programming port
Enclosure.....	High-impact molded ABS plastic, silver
Dimensions (H x W x D).....	6.2 in (157mm) x 9.4 in (239mm) x 2.6 in (66mm)
Weight.....	2 lbs (0.91 kg)
Warranty.....	One Year (Parts & Labor)

All specifications subject to change without notice

* - Two-way feedback available only on the 2.4 GHz T4 (utilizing Zigbee® technology) when used with RTI accessory devices.



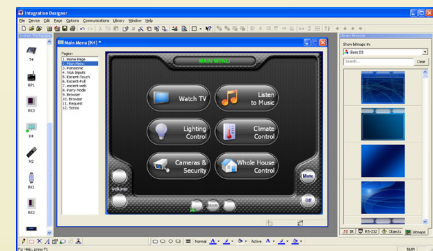
Accessories

RP-1	Remote Control Processor
ZRP-5	Remote Control Processor
ZRP-6	Remote Control Processor
MRP-64	Multi-Room Control Processor
XP-8	Advanced Control Processor
ZM-24	2.4GHz Transceiver Module
RCM-12	Relay Control Module
PCM-8	Port Control Module
ECB-5	IR Emitter Connecting Block
vIRsa Mouse	IR Emitter



Other RTI Products

T1-B	Universal System Controller
M2	Universal System Controller
T2-B	Universal System Controller
T2-Cs	Universal System Controller
T2-C	Universal System Controller
T3-V	Universal System Controller
U1	Weather Resistant Controller
U2	Weather Resistant Controller
RKM-1	In-Wall Multi-Room Audio Keypad
RK1	In-Wall Keypad Controller
RK2	In-Wall Touchscreen Controller
RK3-V	In-Wall Touchscreen Controller
K4	In-Wall Touchscreen Controller
IR-PRO	Infrared Capture System
ZB-PRO	Network Management Tool



Integration Designer® Programming Software

5775 12th Avenue East, Suite 180, Shakopee, MN 55379
PH: (952) 253-3100 • Website: www.rticorp.com

RTI
It's Under Control®