



Key Features

- Dual RF transmission capability uses 433MHz and 2.4GHz (utilizing Zigbee® technology).
- Two-way feedback from compatible devices using 2.4GHz (Zigbee®) and RTI control components.
- Blazing fast 533MHz CPU.
- High contrast, full color OLED display with extremely wide viewing angle.
- Ergonomic design permits effortless, one-handed operation.
- Integrated high-resolution touchscreen.
- Transmits IR and RF (or both - on a single button press!).
- Thirty-five assignable/programmable keypad buttons.
- Three-way rocker switch for scrolling list navigation.
- Tilt switch can automatically turn on the backlight when picked up.
- System includes a Lithium-Ion battery and docking station.
- Completely customizable and programmable.
- Extremely wide IR transmitting frequency range.
- Optional 'Voltage' and 'Video' sensing modules to monitor power status of equipment when used with certain RTI processors.
- Non-volatile Flash memory stores your system configuration even when power is not present.
- Field upgradable firmware.
- Fast USB 2.0 programming.

T2-C+ Universal Controller

Sleek and elegant, the T2-C+ is the fourth generation of RTI's renowned T2 remote control platform. Now featuring a stunning, state-of-the-art OLED color display with an extremely wide viewing angle, superior contrast and excellent brightness control. The amazing T2-C+ Universal System Controller represents a perfect example of style and function, blended seamlessly together. The T2-C+ is loaded with innovations such as a revolutionary dual RF platform to offer communications with RTI central processors either one way at 433MHz or bi-directionally with compatible devices at 2.4GHz. Additional features such as the three-way rocker switch for scrolling list navigation allow the T2-C+ to provide the most satisfying user experience of any remote control in it's class.

Description

The T2-C+ is the ultimate remote control - offering the perfect balance between a customizable touchscreen and a fixed set of hard buttons for tactile control of commonly used functions. With a very modern and impressive industrial design the T2-C+ is thinner, lighter and provides better ergonomics for one handed operation than any other remote control in it's class. The stunning 2.8" OLED display offers a completely configurable user interface, capable of displaying custom text and graphics in vivid detail.

The T2-C+ takes complete control of a building's electronic sub systems, replacing all other controls. The perfect centerpiece of any audio/video installation, giving the user full power and intuitive command with the simple press of a button. The T2-C+ can be used as a stand alone controller or when used with other RTI devices can be an integral part of a advanced control system, offering sophisticated features such as RS-232, IP or relay control, power sensing and RF transmission through walls or cabinets.

Updated with the latest in remote control technology, the T2-C+ has a host of features that separate it from the rest of the pack. A gorgeous high-contrast OLED touchscreen displays graphics in vivid, crystal clear detail. Powerful Zigbee® technology for bi-directional RF communication with RTI control processors and supported third-party devices will provide the user with intuitive feedback and control. With the further ability to view current status information from electronics such as music servers, lighting or even the weather forecast, the T2-C+ is redefining the role of the remote control.

Call 952-253-3100

www.rticorp.com



It's Under Control®

Specifications

Power.....	3.6 VDC, 1200 mAh Lithium-Ion Battery Pack
Power Management.....	Automatic On/Off (tilt switch)
Infrared Control Range.....	30 feet (9.1 meters) @ 60 degrees
Infrared Frequency Transmission Range.....	15kHz - 460kHz
Radio Frequency Control Range.....	Up to 100 feet (30.5 meters)
.....	(with optional System Interfaces/Processors)
Radio Frequency Carrier.....	802.15.4 @ 2.4GHz (Zigbee® Wireless Mesh Networking)
.....	433MHz
Operating Temperature.....	+32°F to +122°F (0°C to +50°C)
Operating Humidity.....	5% to 95% Non-condensing
Touchscreen Display.....	High-brightness color OLED
.....	1/4 VGA (240x320 pixels) with 262K colors
.....	Integrated high-resolution touchscreen
Display Size.....	2.8 in (71mm) diagonal
Backlights.....	Blue/Red/White LED (Keypad)
Nominal Run Time on Full Charge.....	2.5 hours minimum, continuous use
.....	(5 to 7 days on average use)
Standby Time on Full Charge.....	30 Days
Battery Charge Time.....	3-4 Hours
Total System Memory.....	128M Bytes Flash (non-volatile) memory
Device Capability.....	Total number of devices is limited only by memory
Macro Capability.....	Unlimited steps in a single macro
.....	Total number of macros is limited only by memory
.....	Macro capability on every button
Communications.....	USB 2.0 programming port
Dimensions (L x W x D).....	10.0" (254mm) x 2.6" (66mm) x 1.0" (25mm)
Enclosure.....	High-impact molded ABS plastic
Weight.....	9.6 oz. (272g) with battery pack
Warranty.....	One Year (Parts & Labor) / 90 days on the battery

All specifications subject to change without notice

* Two-way feedback available only when used with RTI control components.



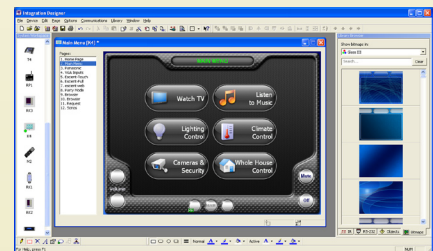
Accessories

RP-1	Remote Control Processor
ZRP-6	Remote Control Processor
MRP-64	Multi-Room Control Processor
XP-3	Advanced Control Processor
XP-6	Advanced Control Processor
XP-8	Advanced Control Processor
RM-433	433MHz RF Antenna
ZM-24	2.4GHz RF Transceiver Module
RCM-12	Relay Control Module
ECB-5	IR Emitter Connecting Block
vIRsa Mouse	IR Emitter



Other RTI Products

T1-B	Universal System Controller
M2	Universal System Controller
T2-B	Universal System Controller
T2-Cs	Universal System Controller
T3-V+	Universal System Controller
T4	Universal System Controller
ST-7	Universal System Controller
U1	Weather Resistant Controller
U2	Weather Resistant Controller
RKM-1	In-Wall Multi-Room Audio Keypad
RK1	In-Wall Keypad Controller
RK2	In-Wall Touchscreen Controller
RK3-V	In-Wall Touchscreen Controller
K4	In-Wall Touchscreen Controller
RK-10	In-wall Touchscreen Controller



Integration Designer® Programming Software

5775 12th Avenue East, Suite 180, Shakopee, MN 55379
PH: (952) 253-3100 • Website: www.rticorp.com

RTI
It's Under Control®