



Key Features

- Ergonomic design permits effortless, one-handed operation.
- Full color TFT LCD to display custom buttons, text and graphics.
- Integrated high-resolution touchscreen.
- Simplified graphics programming.
- Thirty-seven assignable/programmable keypad buttons.
- Three-way rocker switch for scrolling list navigation.
- Tilt switch can automatically turn on the backlight when picked up.
- Extremely bright, backlit display and keypad.
- Intuitive layout of keypad buttons for commonly used functions.
- Transmits IR and RF (or both - on a single button press!).
- Optional RF receiver allows you to transmit through walls, cabinets, etc.
- System includes a Lithium-Ion battery and docking station.
- Extremely wide IR transmitting frequency range.
- Optional 'Voltage' and 'Video' sensing modules to monitor power status of equipment when used with certain RTI processors.
- Optional interface for RS-232 controlled equipment when used with certain RTI processors.
- Non-volatile Flash memory stores your system configuration even when power is not present.
- USB Programming.

T2-Cs Universal Controller

The modern media room needs a remote control that can do it all - provide reliable control of the entire system while remaining easy to use. The T2-Cs answers the call with a customizable color display and the perfect assortment of hard buttons for frequently used functions. The T2-Cs is loaded with unique features like a three-way rocker switch that allows the user to scroll through music lists or navigate on-screen menus on the media room TV. The stylish design of the T2-Cs has been created to complement the décor of any home. Sleek and perfectly balanced, the T2-Cs is smaller and more ergonomic than any color touchscreen remote available.

Description

The T2-Cs embodies simple, elegant control in a modern design. The simplified graphics programming and compact display, combine to bring an advanced color touchscreen to a price level comfortable enough for every budget. The 2.4" color LCD can display custom text and graphics to provide customized, intuitive control. The T2-Cs takes command of the media room and eliminates the clutter of unnecessary remotes on the coffee table. It incorporates all of the control in one intuitive user interface - putting the power at your fingertips with the touch of one button.

The T2-Cs can function as a stand alone system controller or as part of a larger advanced control system. When used with other RTI automation devices, it is capable of transmission via RF, RS-232 communication, relay control and power sensing. The T2-Cs is more than just a remote control - it's an integral part of an expandable control system.

Call 952-253-3100

www.rticorp.com



It's Under Control®

Specifications

Power.....	3.6 VDC, 1200 mAh Lithium-Ion Battery Pack
Power Management.....	Automatic On/Off (tilt switch)
Infrared Control Range.....	30 feet (9.1 meters) @ 60 degrees
Infrared Frequency Transmission Range.....	15kHz - 460kHz
Radio Frequency Control Range.....	Up to 100 feet (30.5 meters)
.....	(with optional System Interfaces/Processors)
Radio Frequency Carrier.....	433 MHz
Operating Temperature.....	+32°F to +122°F (0°C to +50°C)
Operating Humidity.....	5% to 95% Non-condensing
Touchscreen Display.....	High-brightness color TFT LCD
.....	1/4 VGA (240x320 pixels) with 65K colors
.....	Integrated high-resolution touchscreen
Display Size.....	2.4 in (61mm) diagonal
Backlights.....	White LED (Display), Blue/Red/White LED (Keypad)
Nominal Run Time on Full Charge.....	2.5 hours minimum, continuous use
.....	(5 to 7 days on average use)
Standby Time on Full Charge.....	30 Days
Battery Charge Time.....	3-4 Hours
Total System Memory.....	8M Bytes Flash (non-volatile) memory
Device Capability.....	Total number of devices is limited only by memory
Macro Capability.....	Unlimited steps in a single macro
.....	Total number of macros is limited only by memory
.....	Macro capability on every button
Communications.....	USB programming port
Dimensions (L x W x D).....	9.75" (248mm) x 2.5" (64mm) x 1.0" (25mm)
Enclosure.....	High-impact molded ABS plastic
Weight.....	9 oz. (255g) with battery pack
Warranty.....	One Year (Parts & Labor) / 90 days on the battery

All specifications subject to change without notice



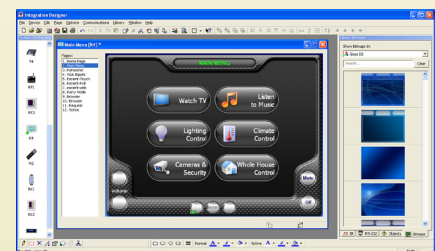
Accessories

RP-1	Remote Control Processor
ZRP-5	Remote Control Processor
ZRP-6	Remote Control Processor
MRP-64	Multi-Room Control Processor
XP-8	Advanced Control Processor
RM-433	RF Receiver
ZM-24	2.4GHz Transceiver Module
RCM-12	Relay Control Module
ECB-5	IR Emitter Connecting Block
CM-232	RS-232 Communication Module
VPS-1	Voltage Power Sensor
SPS-1	Video Sync Power Sensor



Other RTI Products

T1-B	Universal System Controller
M2	Universal System Controller
T2-B	Universal System Controller
T2-C	Universal System Controller
T3-V	Universal System Controller
T4	Universal System Controller
U1	Weather Resistant Controller
U2	Weather Resistant Controller
RKM-1	In-Wall Multi-Room Audio Keypad
RK1	In-Wall Keypad Controller
RK2	In-Wall Touchscreen Controller
RK3-V	In-Wall Touchscreen Controller
K4	In-Wall Touchscreen Controller



Integration Designer® Programming Software