



VTX-T  
HDBaseT Transmitter



VTX-R  
HDBaseT Receiver

## RTI Control System



## VTX-T

### HDBaseT 4K Video Transmitter

The VTX-T HDBaseT 4-play Video Transmitter delivers an HDMI 1080p video signal over Cat5e/6 up to 328ft (100m) and a 4K signal up to 230ft (70m) to the VTX-R HDBaseT Video Receiver. The VTX-T can be powered by the included power supply or through the Cat5e/6 cable using 2-way PoH (Power over HDBaseT). It also transmits Ethernet through the same Cat5e/6 cable as well as an IR or RS-232 signal to control the remote display or projector that's connected to the VTX-R receiver.

## Key Features

- Support for high resolution video up to 4K.
- HDCP 2.2 Compliant, supporting HDMI 1.4.
- Utilizes HDBaseT 4-play technology for HDMI video, Ethernet pass-through, IR and RS-232 control as well as power over Cat5e/6 cable.
- Extends HDMI video at 1080p resolution up to 328ft (100m) and 4K up to 230ft (70m).
- One RS-232 port for control of remote devices over HDBaseT.
- One infrared input and output for 2-way IR transmission over HDBaseT.
- Two 10/100 BaseT RJ45 ports for Ethernet pass-through.
- Ultra-slim design.

## VTX-R

### HDBaseT 4K Video Receiver

The VTX-R HDBaseT 4-play Video Receiver receives an HDMI video signal over Cat5e/6 from a VTX-T HDBaseT Video Transmitter. The VTX-R can be powered using 2-way PoH (Power over HDBaseT). An Ethernet port provides network connection through the remote VTX-T transmitter. It also receives an IR or RS-232 control signal through the same Cat cable and delivers it to the connected display or projector.

## Key Features

- Support for high resolution video up to 4K.
- HDCP 2.2 Compliant, supporting HDMI 1.4.
- Utilizes HDBaseT 4-play technology for HDMI video, Ethernet pass-through, IR and RS-232 control as well as power over Cat5e/6 cable.
- Extends HDMI video at 1080p resolution up to 328ft (100m) and 4K up to 230ft (70m).
- One RS-232 port for control of remote devices over HDBaseT.
- One infrared input and output for 2-way IR transmission over HDBaseT.
- Two 10/100 BaseT RJ45 ports for Ethernet pass-through
- Ultra-slim design.

# Specifications

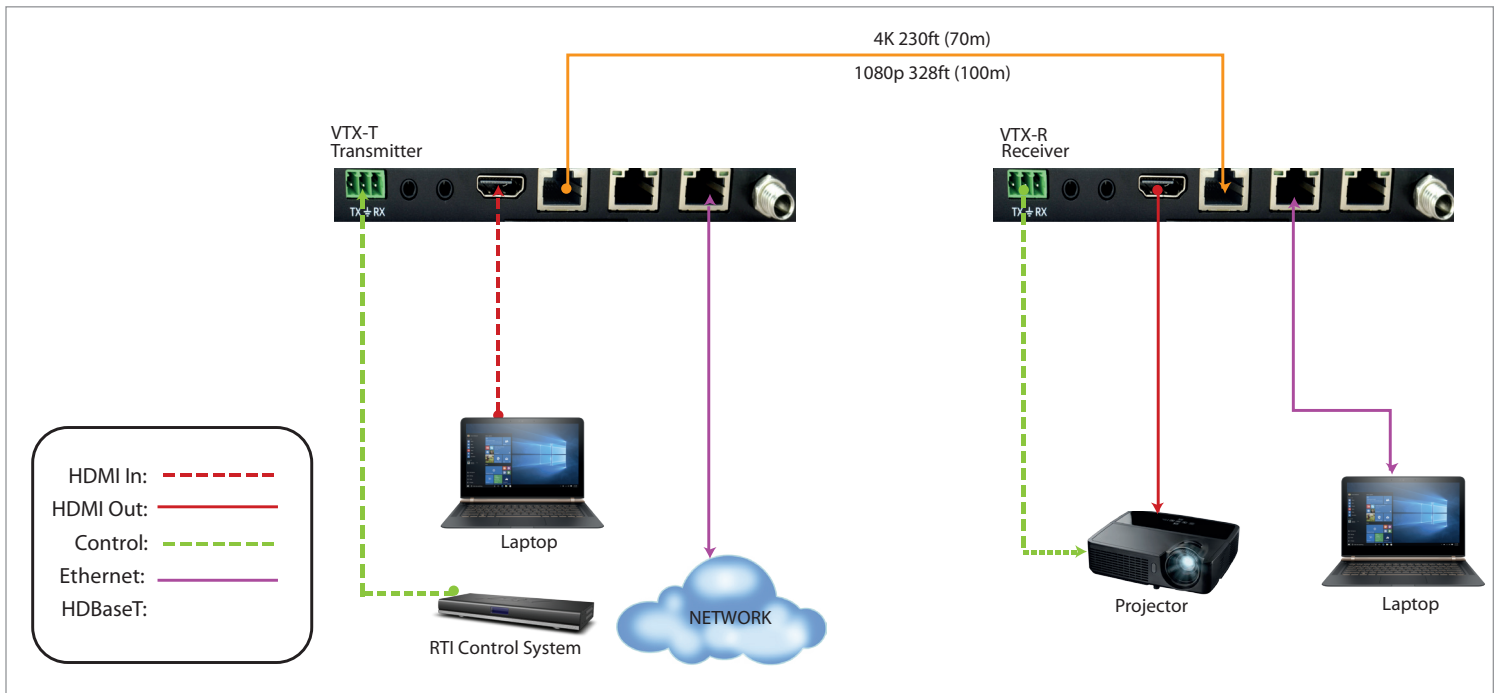
## VTX-T (Transmitter)

Power Supply..... 24VDC 1.25A or via Power over HDBaseT (PoH)  
 Mounting..... Surface / Wall mount or free standing  
 Dimensions WxHxD..... 5.98in(152mm) x 0.64in(16.2mm) x 4.09in(104mm)  
 Weight ..... 0.52 lbs (235g)  
 Operating Temperature..... C 0 to +40 degrees F +32 to +104 degrees  
 Operating Humidity.....5% to 95% Non-condensing  
 Video Input ..... One HDMI  
 Resolution Range.....800x600@60Hz, 1024x768@60Hz,  
 ..... 1280x720@60Hz, 1280x1024@60Hz, 1366x768@60Hz,  
 ..... 1600x1200@60Hz 1920x1080@60Hz, 1920x1200@60Hz 3D, 4K  
 Control Signal Ports..... One, RS-232 bidirectional (3-pin Phoenix Connector)  
 ..... One, IR in (3.5mm jack), One IR out (3.5mm jack)  
 Ethernet Port ..... Two, 10/100Base-T (RJ45)  
 Video/Audio/Control Signal Output..... One HDBaseT (PoH) (RJ45)  
 Bandwidth..... 10.2Gbit/s  
 HDBaseT Transmission Distance ..... 1080P≤328ft (100m)  
 ..... 4K≤230ft (70m)  
 EDID Management..... Built-in EDID data and manual EDID management  
 Compliance ..... HDMI 1.4, HDCP 2.2  
 Warranty..... Three Years (Parts & Labor)

## VTX-R (Receiver)

Power Supply..... Power over HDBaseT (PoH)  
 Mounting..... Surface / Wall mount or free standing  
 Dimensions WxHxD..... 5.98in(152mm) x 0.64in(16.2mm) x 4.09in(104mm)  
 Weight ..... 0.53 lbs (241g)  
 Operating Temperature..... C 0 to +40 degrees F +32 to +104 degrees  
 Operating Humidity.....5% to 95% Non-condensing  
 Video/Audio/Control Signal Input..... One HDBaseT (PoH) (RJ45)  
 Bandwidth..... 10.2Gbit/s  
 HDBaseT Transmission Distance ..... 1080P≤328ft (100m)  
 ..... 4K≤230ft (70m)  
 Video Output..... One HDMI  
 EDID Management..... Built-in EDID data and manual EDID management  
 Compliance ..... HDMI 1.4, HDCP 2.2  
 Resolution Range.....800x600@60Hz, 1024x768@60Hz,  
 ..... 1280x720@60Hz, 1280x1024@60Hz, 1366x768@60Hz,  
 ..... 1600x1200@60Hz 1920x1080@60Hz, 1920x1200@60Hz 3D, 4K  
 Control Signal Ports..... One, RS-232 bidirectional (3-pin Phoenix Connector)  
 ..... One, IR in (3.5mm jack), One IR out (3.5mm jack)  
 Ethernet Port ..... Two, 10/100Base-T (RJ45)  
 Warranty..... Three Years (Parts & Labor)

All features and specifications subject to change without notice



**Remote Technologies Incorporated**  
 5775 12th Avenue East, Suite 180, Shakopee, MN 55379  
 PH: (952) 253-3100 • Website: [www.rticorp.com](http://www.rticorp.com)

